

# Neonatal Unit

James Paget  
University Hospital

Repatriation  
Link Nurse



James Paget Hospital unit  
direct line:

01493 452202 / 01493 452291

Link Nurse Email:

[Jessica.Baisley@JPaget.nhs.uk](mailto:Jessica.Baisley@JPaget.nhs.uk)

# Moving Between Units

## Hello from the Neonatal Unit based at the James Paget Hospital

My name is Jessica and I'm the Repatriation Link Nurse here at the Neonatal Unit (NNU) at the James Paget University Hospital

From the moment your baby is born, our goal is to provide the best care possible in a unit that can meet your baby's needs at every stage of their journey.

My role is to support you throughout your baby's stay on the neonatal unit.

## Supporting you and your family

As your link nurse, I will contact you shortly after your baby is born and will check in with you on a regular basis with weekly calls or emails.

This includes providing you with access to practical advice, emotional support, and financial support, (where needed), as well as ensuring that you know what to expect when your baby is transferred back here to the Neonatal Unit based within James Paget.

Our aim is for James Paget's **Welcome Pack** to be sent to you before transfer. To help familiarise you with our neonatal unit ahead of transfer, a virtual tour or in-person visit to the unit can also be arranged so that you can meet the team and look around the facilities.

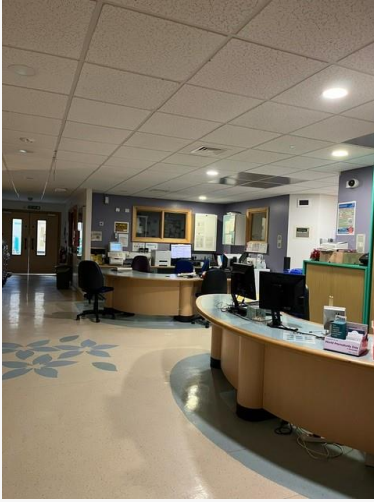
We are really looking forward to welcoming you.

## Contact

Please see our contact details opposite. If you have any questions, concerns, regarding moving between units or would just like a chat, please get in touch.

Date and Time of contact:

Moving between Units – Link nurse leaflet v01\_2024  
Kindly adapted from Thames Valley and Wessex ODN



## Additional Members of the Allied Health Professional team here at James Paget University Hospital

- Dietitian
- Occupational Therapist
- Physiotherapist
- Speech and Language Therapist

**If you have had care plans from any of the above team members, be rest assured that your plans and service will continue. You will be introduced to these team members soon after you arrive on the unit.**



### Further Information

**If you have access to the internet, you can find our Parent's information booklet online which is located on the James Paget's website**

[Welcome-to-the-Neonatal-Unit-Parents-Booklet.pdf \(jpaget.nhs.uk\)](https://www.jpaget.nhs.uk/Welcome-to-the-Neonatal-Unit-Parents-Booklet.pdf)



There is also some information on the James Paget website under the tab 'neonatal unit'

[Neonatal Unit \(jpaget.nhs.uk\)](https://www.jpaget.nhs.uk/Neonatal-Unit)



**Neonatal Operational Delivery Network (ODN) website**

<https://www.eooneonatalpccsicnetwork.nhs.uk/>

Moving between Units – Link nurse leaflet v01\_2024  
Kindly adapted from Thames Valley and Wessex ODN

