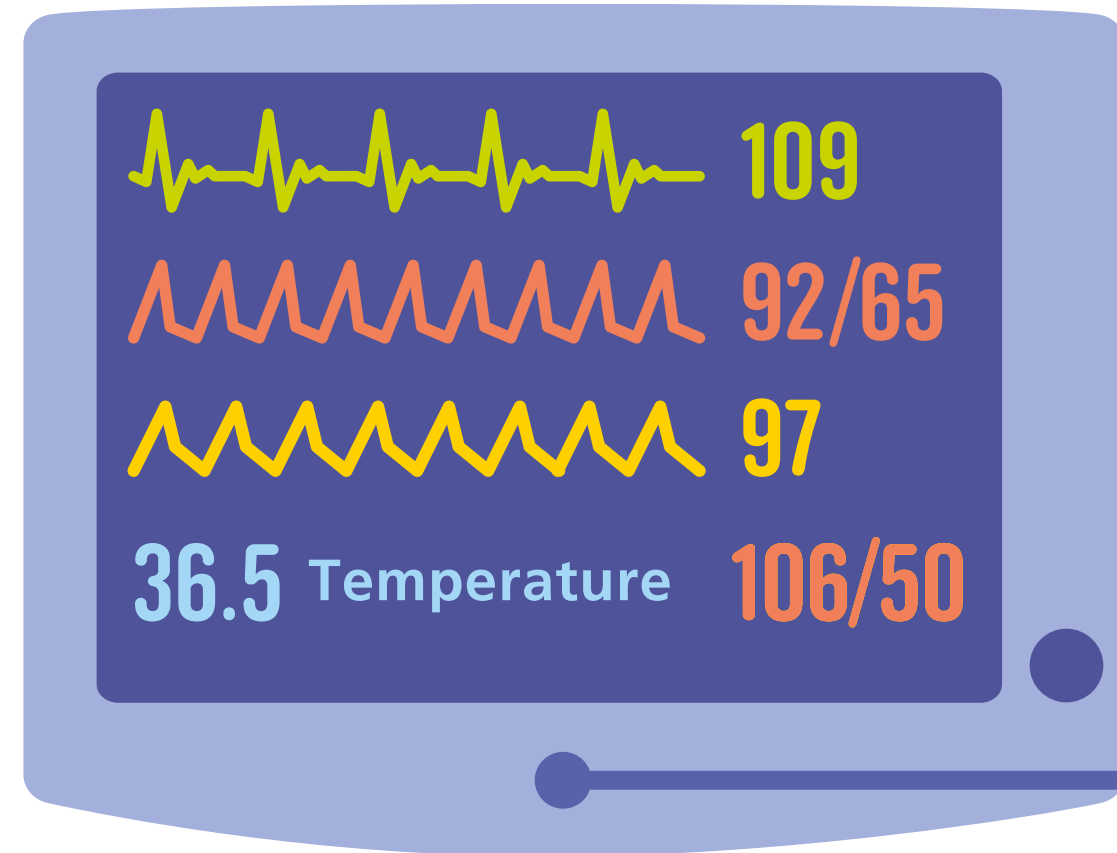
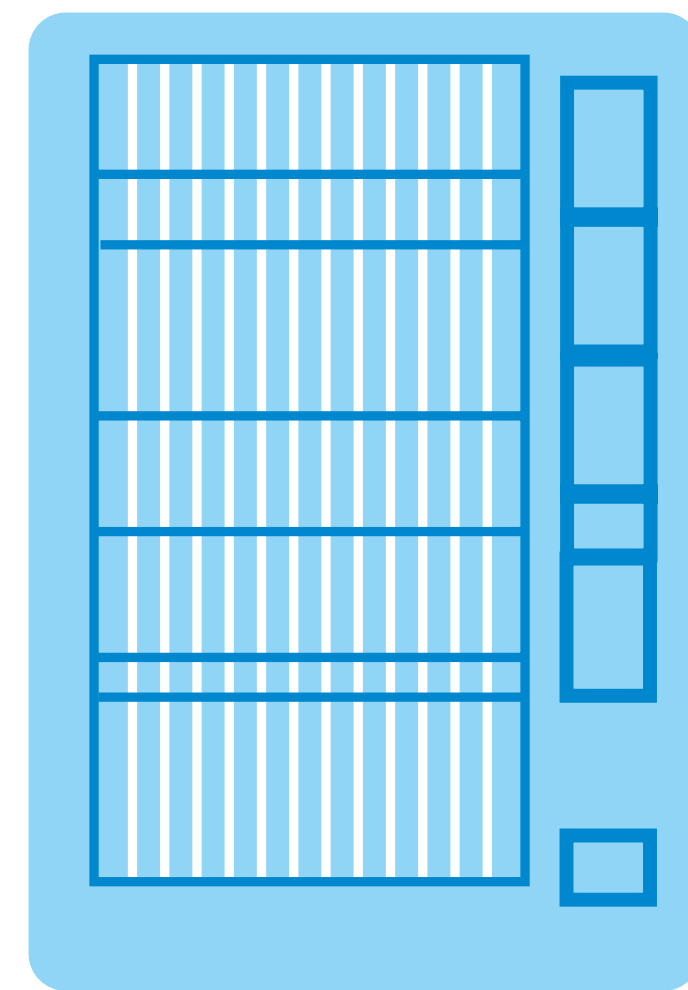


Monitor

Shows vital information about the baby's heart, breathing and blood pressure.



- Heart rate
- Blood pressure
- Oxygen saturation
- Non-invasive blood pressure



Patient record

Recording important data: Blood pressure, heart rate, conscious level, urine output, ventilator settings, oxygen saturations, feeding, nappy care, feed tolerance, pain score and skin integrity.

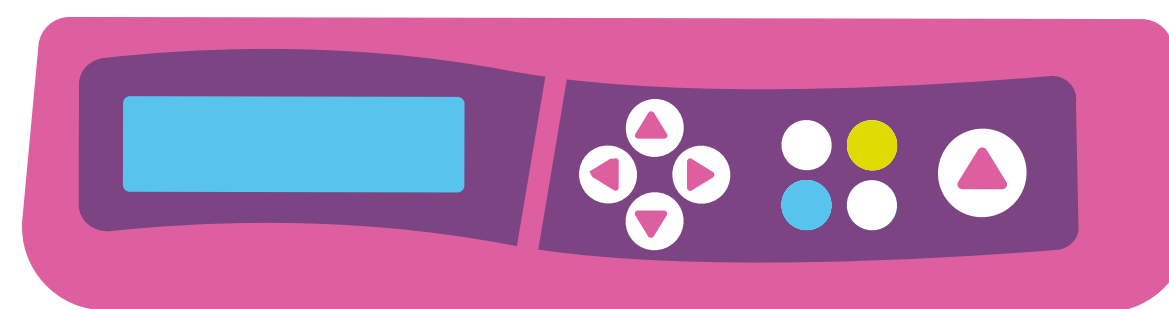
Infusion pumps

Delivers fluids and some medicines into the vein.



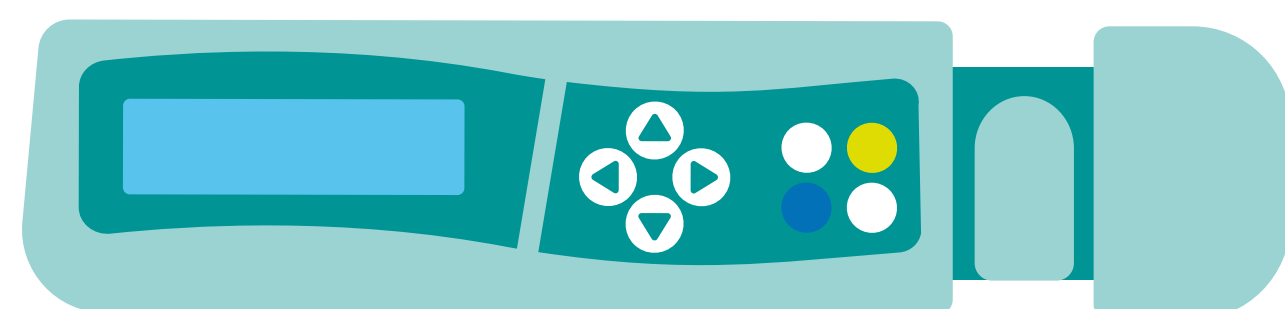
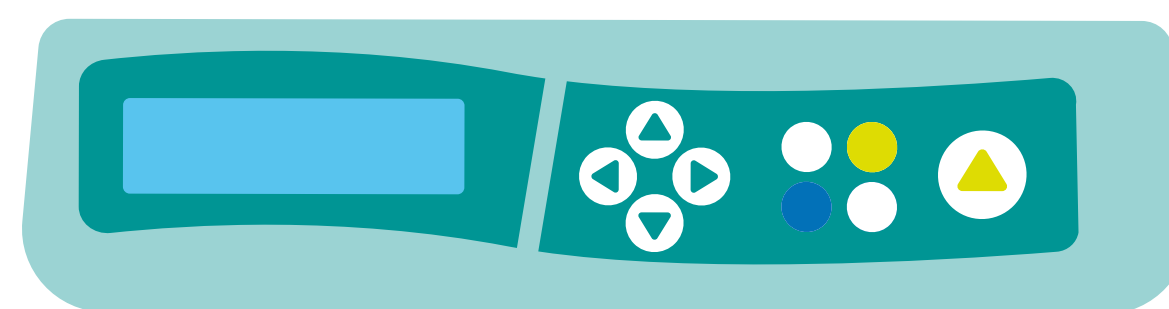
Neopuff

Emergency equipment that delivers high pressure oxygen and air to support breathing.



Arterial line

Thin tube inserted into a small artery to monitor blood pressure and take blood samples – usually into the umbilical cord.



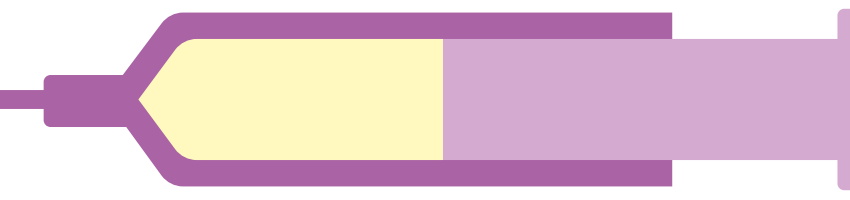
Phototherapy Lamp

Exposes baby's skin to as much light as possible to clear jaundice.



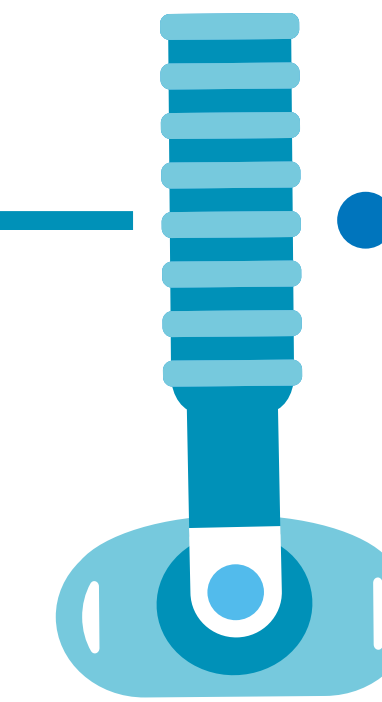
Feeding tube

For when a baby can't yet suck feed.



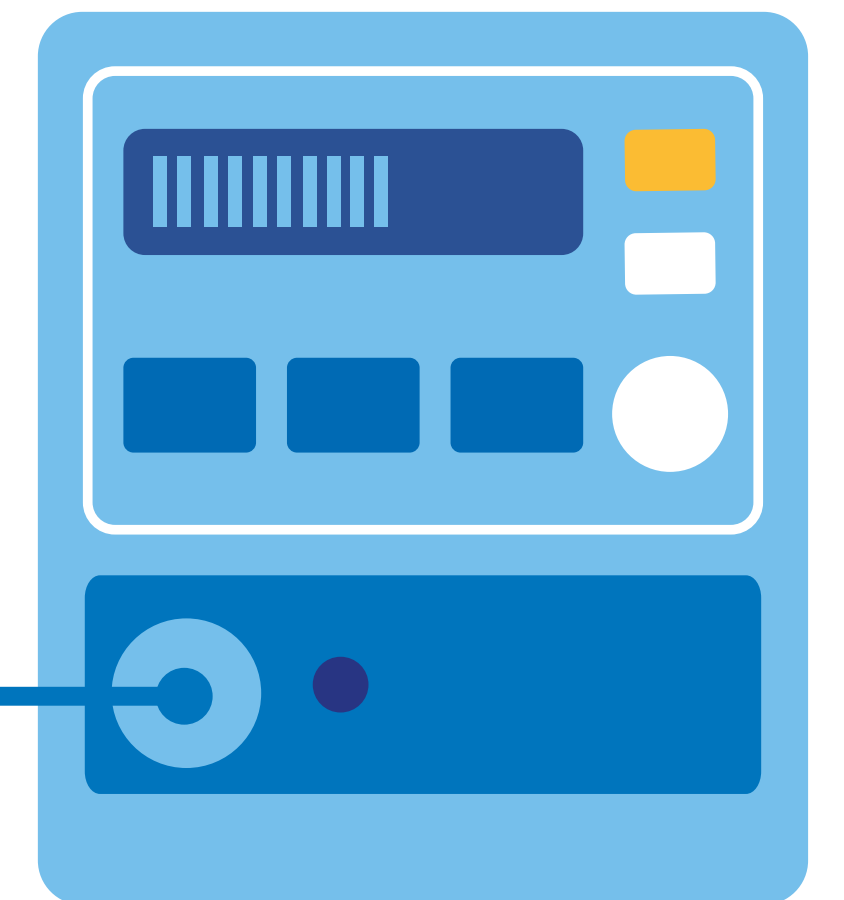
CPAP

Delivers oxygen and constant air pressure which helps the lungs stay open.



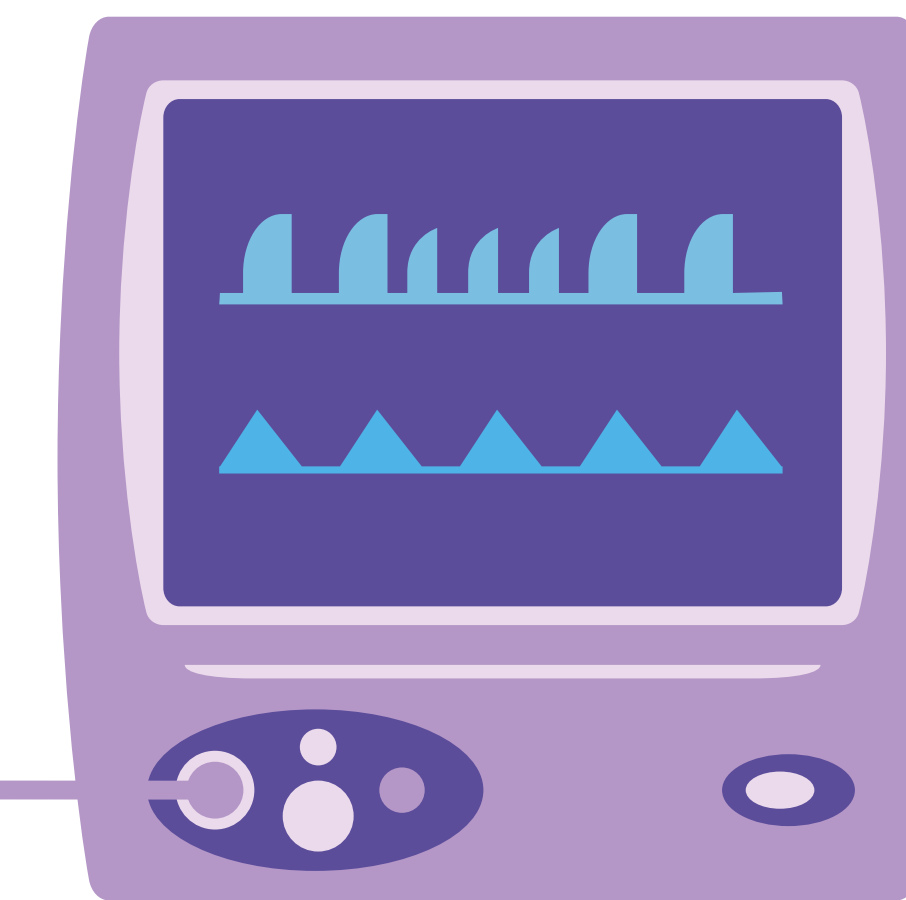
CPAP headset

Delivers fast flowing oxygen into a baby's nose.



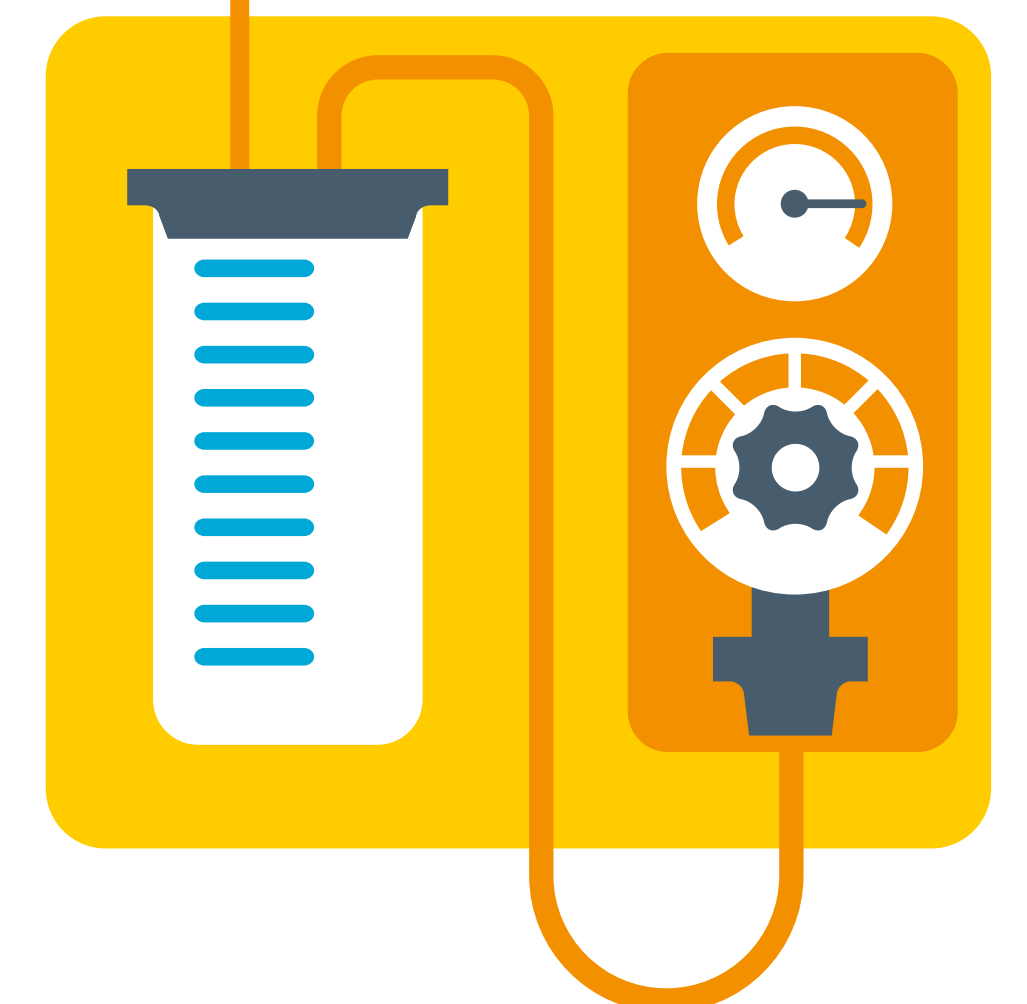
Ventilator

Supports the breathing by getting oxygen into the lungs and removing carbon dioxide from the body.



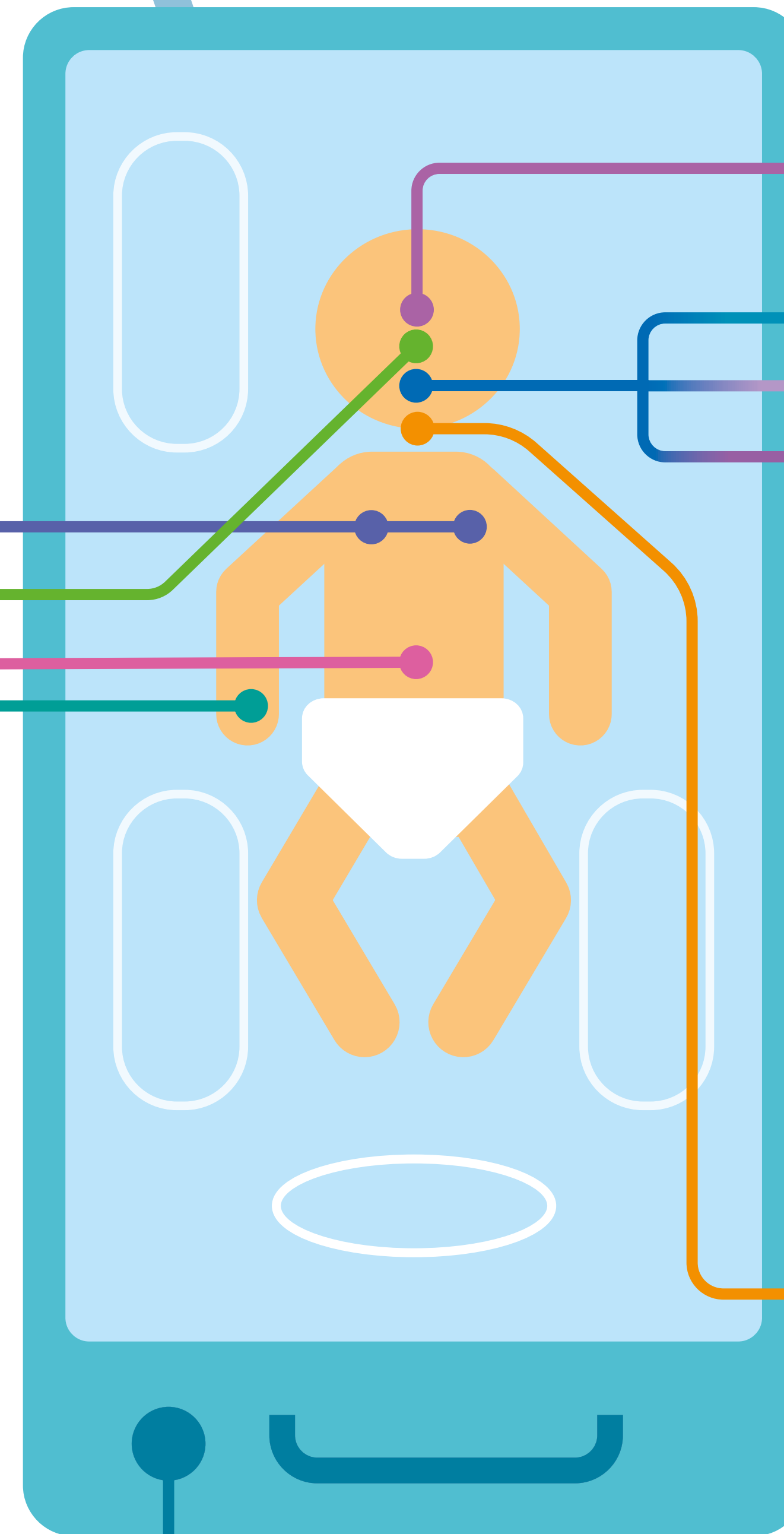
Suction machine

Clears secretions from the airway.



Incubator

Enclosed cot allows baby to be easily observed. Provides warmer air than room temperature and humidity when needed. Covered most of the time to reduce noise and light.



Optiflow oxygen therapy

Delivers fast flowing oxygen and air via a small tube into each nostril to help breathing.



Neonatal Intensive Care Unit

Equipment you may see at the bedside