

FiCare—Communication

Virtual Study Day

7th November 2023

09:00-15:30



Aims of the day

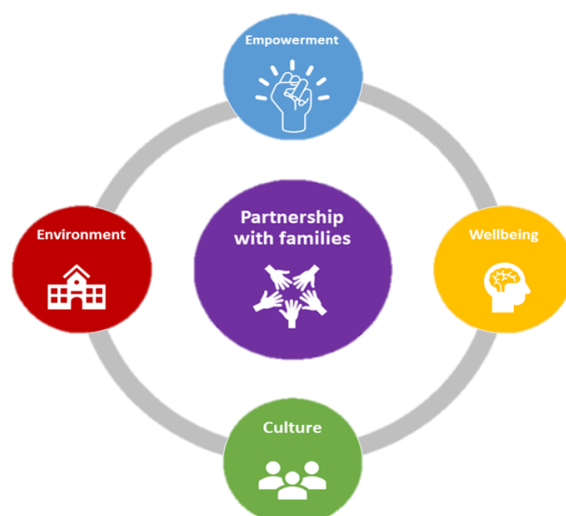
This is an interactive online study day, please complete the two pre event learning activities. This study day is designed to increase your understanding of communications with the family in a way that enhances FiCare. The day will include challenges and solutions to help you empower families and increase the level of joint decision making. You will hear through the parent voice, the importance of parent partnership.

Throughout the day, our expert speakers will share their clinical and personal expertise, equipping you with the knowledge to support the neonate and family through their NICU stay.

There will be opportunity for you to ask questions, learn from real life case studies and share your own experiences with the faculty and fellow delegates.

The Faculty:

- Julia Cooper, East of England Neonatal ODN Lead Care Coordinator
- Paula Peirce, East of England Neonatal ODN Care Coordinator
- Kelly Phizacklea, East of England PAG Chair and MNVP



BAPM Rings

FiCare—Communication

Virtual Study Day

7th November 2023

09:00-15:30

nhsnetworks

East of England
Operational Delivery Network
Education

NHS



09:15-09:30 Welcome and Introduction

East of England Neonatal Care Coordinator Team

Kelly Phizacklea, East of England PAG Chair and MNVP

09:30-10:30 Methods of and Challenges to Communication

East of England Neonatal Care Coordinator Team

Kelly Phizacklea, East of England PAG Chair and MNVP

10:30-11:00 Self Reflection and Tree of Life Feedback

East of England Neonatal Care Coordinator Team

Kelly Phizacklea, East of England PAG Chair and MNVP

11:00-11:15 Comfort Break

11:15-12:00 Culture and Culture Competency

East of England Neonatal Care Coordinator Team

Kelly Phizacklea, East of England PAG Chair and MNVP

12:00-12:30 Health Inequalities

East of England Neonatal Care Coordinator Team

12:30-13:15 Lunch

13:15-13:45 Building Relationships

East of England Neonatal Care Coordinator Team

Kelly Phizacklea, East of England PAG Chair and MNVP

13:45-14:30 Challenges and Solutions

East of England Neonatal Care Coordinator Team

Kelly Phizacklea, East of England PAG Chair and MNVP

14:30-14:45 Comfort Break

14:45-15:15 Personal Resilience

East of England Neonatal Care Coordinator Team

15:15-15:30 Feedback, Evaluation and Close

East of England Neonatal Care Coordinator Team

This study day is subject to change