

# Neonatal Units



## Neonatal Intensive Care Units

Cambridge  
Luton & Dunstable  
Norfolk & Norwich

## Local Neonatal Units

Basildon  
Broomfield  
Colchester  
Harlow, Princess Alexandra  
Ipswich  
Kings Lynn, Queen Elizabeth  
Lister  
Peterborough  
Southend  
Watford

## Special Care Units

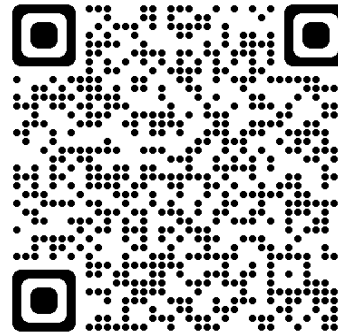
Bedford  
Hinchingsbrooke  
James Paget  
West Suffolk

Get in Touch



Mail

[add-tr.eooneonatalodn@nhs.net](mailto:add-tr.eooneonatalodn@nhs.net)



QR code - EOE Neonatal ODN



## Repatriation of your baby

In the UK neonatal units are designated by the level of care they deliver. Neonatal Intensive Care Units (NICU's) look after preterm babies from 22 weeks, sick term babies or babies that require specialist care. Local Neonatal Units (LNU's) look after babies from 27 weeks' gestation and Special Care Units (SCU's) from 32 weeks' gestation. For multiples, the admission criteria is different.

Within the East of England Neonatal Operational Delivery Network (ODN) there are 17 different neonatal units. All the units have specially qualified neonatal staff, who can care for your baby at each stage of their neonatal journey.

The location of care for your baby may change throughout their neonatal journey and whilst this may not be close to your home initially, the aim is to transfer your baby back to your local unit as soon as they are well enough, and it is safe to do so.

When possible, if you require hospital care after birth, you will be transferred to a maternity unit in the same hospital as your baby.

You may have met the neonatal team in your local unit before your baby is transferred for specialist care, but this may not have happened if you were transferred before your baby was born. Throughout your baby's stay you will be involved on your baby's care.

Your local unit will receive regular updates. Your baby's progress will be shared with your local unit prior to transfer.

The transfer of your baby for ongoing care in your local unit, will be planned between the referring unit, the local unit and yourselves. We would never transfer your baby without discussing with you. However, the transfer can sometimes be at short notice.

We encourage you to visit your local unit if able, or you can access a virtual tour prior to your baby's transfer.

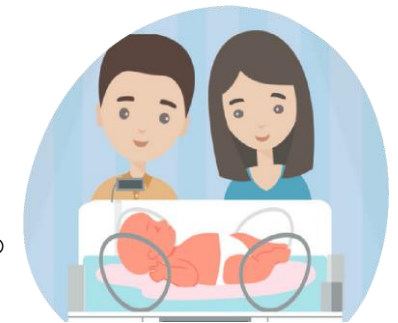
Please ask a member of the nursing team how to contact your local neonatal repatriation Link Nurse or Senior Coordinators within each unit.

Moving units can be very daunting for parents but we will support you throughout your baby's transfer.

This is a very normal feeling to have, but your new setting will soon become more familiar. You may find supportive to be closer to your friends and family.

You will meet the team that will be continuing care on your baby's journey, within the neonatal setting and after discharge.

We are always here to answer any questions you may have. Please contact a member of the nursing or medical team, who will be happy to help you.



V-Create®



Video about Repatriation from V-Create and Thames Valley and Wessex ODN